



Valvole Regime Minimo Idle Control Valves



Gennaio 2018 / January 2018

**ERA**

Valvole regime minimo Idle Control Valve

Applicazioni veicolari - Vehicles applications

ALFA ROMEO				BMW	
145		2.6	556015	1	
1.4 i.e.	556044	2.6 quattro	556015	118 i	556056
1.4 i.e. 16V T.S.	556072			120 i	556056
1.6 i.e.	556044	80			
1.6 i.e. 16V T.S.	556072	2.6	556056	3	
1.8 i.e. 16V T.S.	556072	2.6 quattro	556015	316 Ci	556056
2.0 16V T.S.	556072	2.6 quattro	556056	316 i	556056
				316 ti	556056
146		A4		318 Ci	556056
1.4 i.e.	556044	2.6	556015	318 i	556056
1.4 i.e. 16V T.S.	556072	2.6	556056	318 ti	556056
1.6 i.e.	556044	2.6 quattro	556015	320 i	556056
1.6 i.e. 16V T.S.	556072	2.7 TDI	556128	320 si	556056
1.8 i.e. 16V T.S.	556072	2.7 TDI	556272		
2.0 16V T.S.	556072	3.0 TDI quattro	556128	5	
		3.0 TDI quattro	556272	520 i	556056
147		A4 Allroad			
1.9 JTD 16V	556088	3.0 TDI quattro	556272	X1	
1.9 JTD 16V	556088			sDrive 18 i	556056
1.9 JTD 8V	556088	A5			
		2.7 TDI	556272	X3	
155		3.0 TDI quattro	556272	2.0 i	556056
1.6 16V T.S.	556072				
1.7 T.S.	556124	A6		Z4	
1.7 T.S. 16V	556072	2.6	556056	2.0 i	556056
1.8 T.S.	556124	2.6 quattro	556056		
1.8 T.S. Sport	556124	2.7 TDI	556128	CHEVROLET	
2.0 T.S.	556124	2.7 TDI	556272	AVEO	
2.0 T.S. 16V	556072	2.7 TDI	556128	1.2	556073
2.5 V6	556124	2.7 TDI quattro	556128	1.4	556073
		2.7 TDI quattro	556272	EVANDA	
156		3.0 TDI	556128	2.0	556117
1.6 16V T.SPARK	556072	3.0 TDI quattro	556128	REZZO	
1.6 16V T.SPARK.	556072	3.0 TDI quattro	556272	2.0	556117
1.9 JTD	556088			CHRYSLER	
1.9 JTD 16V Q4	556088	A6 Allroad		300 C	
		2.7 TDI quattro	556128	3.0 CRD	556090
159		2.7 TDI quattro	556272	VOYAGER	
1.9 JTD 16V	556088	3.0 TDI	556128	2.5 i	556007
1.9 JTD 8V	556088	3.0 TDI quattro	556128	CITROËN	
		3.0 TDI quattro	556272	AX	
164				11	556011
2.0 T.S.	556124	A8		11	556053
3.0	556124	3.0 TDI quattro	556128	11 4x4	556053
3.0 24V	556124	4.2 TDI quattro	556272	11 Cat	556053
3.0 24V Q4	556124			14	556011
3.0 24V QV	556124	CABRIOLET		14	556055
3.0 24V QV Trazione integrale	556124	2.0 E	556015	14 4x4	556011
3.0 V6	556124	2.6	556015	14 4x4	556055
		2.6	556056	BERLINGO	
33		COUPE		1.1 i	556065
1.4 i.e.	556008	2.0	556015	BX	
1.4 i.e. 4x4	556008	2.2 GT	556124	14	556011
1.5 i.e.	556008	2.6	556015	C15	
1.5 i.e.	556008	2.6 quattro	556015	1.1 i	556011
1.7 i.e.	556008	2.6 quattro	556056	1.4 i	556011
1.7 i.e. 4x4	556008	Q5		C5	
		3.0 TDI quattro	556272	1.8 16V	556054
GT					
1.9 JTD	556088	Q7			
		3.0 TDI quattro	556128	AUTOBIANCHI	
GTV		3.0 TDI quattro	556272	Y10	
2.0 T.SPARK 16V	556072	4.2 TDI quattro	556272	1.0 Cat	556011
3.0 V6 24V	556124			1.1	556011
		SPIDER		1.1 4WD	556011
2.0 T.SPARK 16V	556072	1.1 i.e. Cat	556011		
3.0 V6	556124				
		AUDI			
100					

Original equipment numbers and pictures in this catalogue are used for reference purposes only.

**ERA**

Valvole regime minimo Idle Control Valve

Applicazioni veicolari - Vehicles applications

2.0 16V	556040
EVASION	
2.0 16V	556040
JUMPY	
2.0	556040
SAXO	
1.1 X,SX	556065
1.1 X,SX	556098
1.6 VTL,VTR	556141
XSARA	
2.0 16V	556040
XSARA PICASSO	
1.8 16V	556040
1.8 16V	556054
2.0 16V	556040
ZX	
1.1	556011
1.4 i	556055
DAEWOO	
EVANDA	
2.0	556117
KALOS	
1.2	556073
1.4 16V	556073
LANOS	
1.3	556073
1.5	556073
1.6 16V	556073
LEGANZA	
2.0 16V	556117
2.2 16V	556117
MATIZ	
0.8	556048
NUBIRA	
1.6 16V	556073
1.8	556117
2.0 16V	556073
2.0 16V	556117
REZZO	
2.0	556117
FERRARI	
348 tb/GTB	
3.4	556124
348 ts/GTS	
3.4	556124
5 MARANELLO	
550	556124
512 TR	
5.0	556124
F355	
3.5	556124
F355 Berlinetta	
3.5	556124
MONDIAL	
3.4 T	556124
FIAT	
500	
1.2	556052
BRAVA	
1.6 16V	556044
BRAVO	
1.6 16V	556044
2.0 HGT 20V	556072
CINQUECENTO	
0.9 i.e. S	556009
COUPE	
2.0 20V	556072
2.0 20V Turbo	556072
CROMA	
1.9 D Multijet	556088
2500 V6	556124
DOBLO	
1.2	556052
1.4	556052
FIORINO	
1.5	556011
70 i.e. 1.4	556011
75 i.e. 1.5	556011
75 i.e. 1.6	556011
FIORINO Pick up	
1.4	556011
1.6	556011
GRANDE PUNTO	
1.2	556052
1.4	556052
LINEA	
1.4	556052
MAREA	
1.6 100 16V	556044
1.6 100 16V Bipower	556044
2.0 150 20V	556072
PALIO	
1.0	556265
1.2	556047
1.2	556052
1.6 16V	556044
PANDA	
1.1	556052
1.2	556052
1.2 4x4	556052
1000	556045
1000 4x4	556045
1000 i.e	556011
1000 i.e	556045
1000 i.e	556052
1000 i.e. Cat	556011
1000 i.e. Cat	556045
1100	556011
1100	556052
1100 Trekking 4x4	556011
1100 Trekking 4x4	556052
900	556009
PUNTO	
1.2 60	556052
1.2 Natural Power	556052
1.4 GT Turbo	556072
1.4 GT Turbo	556124
55 1.1	556045
60 1.2	556045
75 1.2	556047
REGATA	
75 i.e. 1.5	556011
RITMO	
1.6	556011
RITMO II (138)	
75 1.5	556011
SCUDO	
1.6	556011
SEICENTO / 600	
0.9	556009
1.1	556052
SIENA	
1.0	556265
1.2	556047
1.6 16V	556044
STILO	
1.9 D Multijet	556088
STRADA	
1.2	556047
1.2	556052
TEMPRA	
1.4 i.e.	556011
1.6 i.e.	556011
1.8 i.e.	556044
TIPO	
1.4 i.e.	556011
1.6 i.e.	556011
1.8 i.e	556044
1.8 i.e.	556044
UNO	
45 i.e. 1.0	556011
45 i.e. 1.0	556045
50 1.1	556011
50 i.e. 1.1	556011
70 i.e. 1.4	556011
75 i.e. 1.5	556011
FORD	
COUGAR	
2.0 16V	556021
2.0 16V	556063
2.5 ST 200	556061
2.5 V6 24V	556061
2.5 V6 24V	556063
ESCORT	
1.3	556000
1.3	556026
1.4	556019
1.4 i	556019
1.6	556019
1.6 16V	556000
1.6 16V	556018
1.6 16V 4x4	556000
1.6 16V 4x4	556018

Original equipment numbers and pictures in this catalogue are used for reference purposes only.

Pag. 2 di 6

**ERA**

Valvole regime minimo Idle Control Valve

Applicazioni veicolari - Vehicles applications

1.6 16V XR3i	556000	2.0 i	556060	ATOS PRIME	
1.6 16V XR3i	556018	2.0 i	556063	1.0 i	556123
1.6 i 16V	556000	2.0 i 16V 4x4	556060		
1.6 i 16V	556018	2.5 24V	556060	COUPE	
1.6 Turbo RS	556019	2.5 24V	556063	1.6 16V	556075
1.8 16V	556000	2.5 i 24V	556060	1.6 16V	556124
1.8 16V	556018	2.5 ST 200	556060	1.6 i 16V	556124
1.8 16V XR3i	556000	2.5 V6 24V	556061	2.0	556076
1.8 16V XR3i	556018	3.0 V6 24V	556062	2.0	556124
1.8 i 16V	556018	ST220	556062	2.0 16V	556124
1.8 XR3i 16V 4x4	556018				
RS 2000	556020	ORION		ELANTRA	
RS 2000	556064	1.4 Cat	556019	1.8	556076
RS 2000 4x4	556020	1.6 i	556019	2.0	556076
RS 2000 4x4	556064	1.6 i 16V	556018		
RS Cosworth 4x4	556027	1.8 i 16V	556018	GETZ	
				1.1	556123
ESCORT CLASSIC		PUMA		1.3 i	556076
1.6 16V	556000	1.6 16V	556025	1.5 CRDi	556076
		1.7 16V	556024		
FIESTA		SCORPIO		H-1 / STAREX	
1.25 i 16V	556028	2.0	556027	2.5 TD 4WD	556075
1.25 i 16V	556049	2.0 i	556020		
1.3	556000	2.0 i	556027	H-1 / STAREX Autobus (KMF)	
1.3	556026	2.0 i 16V	556020	2.5 CRDi	556075
1.3 i	556000	2.3 i 16V	556058	2.5 CRDi 4WD	556075
1.3 i	556026	2.4 i	556027	2.5 TD	556075
1.4 16V	556025	2.9 24V	556027		
1.4 Cat	556019	2.9 i	556027	LANTRA	
1.4 i 16V	556049	2.9 i 24V	556027	1.5 12V	556124
1.6 16V	556025	2.9 i 24V	556027	1.5 i.e.	556124
1.6 16V Sport	556025	2.9 i 4x4	556027	1.6 16V	556124
1.6 i 16V	556000			1.6 i	556124
1.6 i 16V	556018	SIERRA		1.8 16V	556124
1.6 Turbo	556019	2.0 4x4	556027	2.0 16V	556124
1.8 16V	556000	2.0 i	556027		
1.8 16V	556018	2.0 i Cat	556027	MATRIX	
1.8 XR2i 16V	556000	2.9	556027	1.6	556075
1.8 XR2i 16V	556018	2.9 4x4	556027	1.8	556076
		2.9 i	556027		
FOCUS		2.9 i XR 4x4	556027	PONY	
1.4 16V	556022			1.5 i	556124
1.6 16V	556022	TOURNEO CONNECT			
1.8 16V	556026	1.8 16V	556026	PONY / EXCEL	
2.0 16V	556026			1.5 i	556124
RS	556025	TRANSIT			
		2.0	556020	S COUPE	
GALAXY		2.0	556027	1.5 i	556124
2.0 i	556020	2.0 i	556027	1.5 i Turbo	556124
2.3 16V	556058	2.3 16V	556059		
2.3 16V	556059	2.3 16V [RWD]	556059	TRAJET	
		2.9 i	556027	2.0	556075
KA		TRANSIT CONNECT			
1.3 i	556000	1.8 16V	556026	TUCSON	
1.3 i	556026			2.0	556075
1.3 i	556029				
MAVERICK		FORD USA		XG	
2.0 16V	556050			250	556075
3.0 V6 24V	556078	EXPLORER		30	556075
		4.0	556051		
MONDEO				KIA	
1.6 i	556060			CARENS	
1.6 i	556063	ACCENT		1.6	556072
1.6 i 16V	556060	1.3	556124	1.8	556072
1.8 16V	556023	1.3 i 12V	556124	1.8 i	556072
1.8 16V	556061	1.5	556076		
1.8 i	556021	1.5 i 12V	556124	CARNIVAL	
1.8 i	556060	1.5 i 16V	556075	2.5 V6	556072
1.8 i	556063	1.6	556076		
1.8 i 16V	556049	ATOS		CLARUS	
1.8 i 16V	556060	1.0 i	556123	1.8 i 16V	556072
1.8 i 16V 4x4	556049			2.0 i 16V	556072
2.0 16V	556023				
2.0 16V	556061			RIO	
2.0 i	556021				

**ERA**

Valvole regime minimo Idle Control Valve

Applicazioni veicolari - Vehicles applications

1.3	556072	LAND ROVER	E 280 CDI 4-matic	556090		
1.5 16V	556072		E 280 T CDI	556090		
SEPHIA		DISCOVERY	E 280 T CDI 4-matic	556090		
1.8 i 16V	556072	4.0 V8 4x4	556270	E 300 BlueTEC	556090	
SHUMA		RANGE ROVER	E 320 CDI	556092		
1.5 i 16V	556072	4.0 4x4	556270	E 320 T CDI	556090	
1.6	556072	4.6 4x4	556270	E 320 T CDI	556092	
1.8 i 16V	556072	MAZDA		E 320 T CDI 4-matic	556090	
SPORTAGE		323 S	CLASSE G	G 320 CDI	556090	
2.0 i 16V	556072	1.4 16V	556066	CLASSE GL		
2.0 i 16V	556124	1.5 16V	556066	GL 320 CDI / 350 BlueTEC 4-matic	556090	
2.0 i 16V 4WD	556124	1.9 16V	556066	GL 320 CDI 4-matic	556090	
2.0 i 4WD	556124	2.0 D	556066	CLASSE GLK		
LADA		2.0 TD	556066	320 CDI 4-matic	556090	
110		626	1.8	556066	350 CDI 4-matic	556090
1.5	556080	1.8	556067	CLASSE M		
1.5 16V	556080	1.8 i	556067	ML 270 CDI	556093	
111		2.0	556066	ML 280 CDI 4-matic	556090	
1.5	556080	2.0 DiTD	556066	ML 320 CDI 4-matic	556090	
1.5 16V	556080	2.0 i	556067	ML 350 CDI 4-matic	556090	
1.6	556080	2.5 24V	556067	CLASSE R		
112		MPV	2.0	556066	R 280 CDI	556090
1.5	556080	2.0	556066	R 280 CDI 4-matic	556090	
1.5 16V	556080	MX-6	2.0	556067	R 320 CDI 4-matic	556090
1.6	556080	2.5 24V	556067	CLASSE S		
LANCIA		2.5 i 24V	556067	S 320 CDI	556092	
DEDRA		PREMACY	1.9	556066	S 320 CDI 4-matic	556090
1.6 i.e.	556004	2.0	556066	CLK		
1.6 i.e.	556011	2.0 TD	556066	270 CDI	556093	
DELTA		TRIBUTE	2.0	556050	320 CDI	556090
1.4 i.e.	556011	3.0 V6 24V 4WD	556078	CLK 320 CDI	556090	
1.6 i.e.	556011	3.0 V6 AWD	556078	CLS		
1.6 i.e.	556044	MERCEDES-BENZ		CLS 320 CDI	556090	
1.6 i.e. 16V	556044	CLASSE A	A 160 CDI	556089	SPRINTER	
1.8 i.e.	556044	A 180 CDI	556089	218 CDI	556090	
KAPPA		A 200 CDI	556089	318 CDI	556090	
2.0 20V	556072	CLASSE B	B 180 CDI	556089	518 CDI	556090
2.0 20V Turbo	556072	B 200 CDI	556089	VIANO		
2.4 20V	556072	CLASSE C	C 200 CDI	556093	CDI 2.0	556091
3.0 24V	556124	C 220 CDI	556093	CDI 2.2	556091	
MUSA		C 270 CDI	556093	CDI 2.2 4-matic	556091	
1.4	556052	C 320 CDI	556090	CDI 3.0	556090	
THEMA		C 320 CDI 4-matic	556090	VITO		
2000 16V Turbo	556124	C 350 CDI	556090	111 CDI	556091	
2000 Turbo 16V	556124	C 350 CDI 4-matic	556090	111 CDI 4x4	556091	
3000 V6	556124	CLASSE E	E 200 CDI	556093	115 CDI	556091
Y		E 220 CDI	556093	E 220 T CDI	556093	
1.2	556052	E 270 CDI	556093	E 270 CDI	556093	
Y10		E 270 T CDI	556093	E 270 T CDI	556093	
1.0 Fire Catalytic-Conv	556011	E 280 CDI	556090	E 280 CDI	556090	
1.0 Fire Catalytic-Conv	556045	E 280 CDI	556092	OPEL		
1.1 i.e Fire	556011	CLASSE E		ASCONA		
1.1 i.e Fire Trazione integrale	556011	E 200 CDI	556093	1.6 i	556002	
1.1 i.e. Fire	556011	E 220 CDI	556093	1.6 i	556074	
YPSILON		E 220 T CDI	556093			
1.2	556052	E 270 CDI	556093			
		E 270 T CDI	556093			
		E 280 CDI	556090			
		E 280 CDI	556092			

**ERA**

Valvole regime minimo Idle Control Valve

Applicazioni veicolari - Vehicles applications

1.6 i Cat	556002	SINTRA		2.0 S16	556040
1.6 i Cat	556074	2.2 i 16V	556125		
ASTRA		TIGRA		306	
1.2 16V	556013	1.4 16V	556003	1.1	556011
1.4	556266	1.4 16V	556266	1.1	556053
1.4 16V	556003	1.6 16V	556003	1.1	556065
1.4 i	556001	1.6 16V	556266	1.4	556039
1.4 i	556266			1.4	556042
1.4 i 16V	556003	VECTRA		1.4	556043
1.4 i 16V	556266	1.6 i	556002	1.4	556055
1.4 Si	556003	1.6 i	556074	1.4 SL	556034
1.6 16V	556003	1.6 i	556266	1.4 SL	556039
1.6 i	556002	1.6 i	556003	1.4 SL	556042
1.6 i	556074	1.6 i 16V	556003	1.4 SL	556043
1.6 i 16V	556003	1.6 i 16V	556266	1.4 SL	556055
1.6 Si	556003	1.6 i Cat	556002	1.6	556141
1.8 i	556002	1.6 i Cat	556074	1.6 SR	556016
1.8 i	556074	1.8 i 16V	556005	1.6 SR	556141
1.8 i 16V	556005	1.8 i 16V	556266	1.8 16V	556032
1.9 CDTI	556088	1.8 i Cat	556002	1.8 16V	556046
1.9 CDTI 16V	556088	1.8 i Cat	556074	1.8 ST	556030
2.0 16V	556005	1.9 CDTI	556088	2.0	556041
2.0 i 16V	556005	2.0 i 16V	556005	2.0	556046
		2.0 i 16V 4x4	556005	2.0 16V	556041
		2.5	556125	2.0 16V	556046
		2.5 i V6	556125	2.0 S16	556046
		i 500 2.5	556125	2.0 ST	556030
ASTRA F CLASSIC		VIVARO		307	
1.4 i	556266	2.0 16V	556037	1.4	556039
1.6 i	556266			2.0 16V	556040
CALIBRA		ZAFIRA		309	
2.0 i 16V	556005	1.6 16V	556003	1.1	556011
2.0 i 16V 4x4	556005	1.9 CDTI	556088	1.4	556011
COMBO				405	
1.2	556001			1.8	556030
1.2	556266			1.8	556041
1.4	556001			2.0	556030
1.4	556002			2.0 T 16 X4	556030
1.4	556003			406	
1.4	556074			1.6	556030
1.4	556266			1.8	556030
CORSA				1.8	556032
1.0 i 12V	556013			1.8 16V	556032
1.2 i	556001			1.8 16V	556046
1.2 i 16V	556013			1.8 16V	556054
1.3 i	556001			2.0 16V	556040
1.4 i	556001			2.0 16V	556041
1.4 i	556002			605	
1.4 i	556074			2.0 16V	556041
1.4 i 16V	556003			806	
1.4 Si	556003			1.8	556030
1.6 GSI	556003			2.0	556030
1.6 GSI 16V	556003			2.0 16V	556040
1.6 GSI Cat	556003			2.0 16V	556041
1.6 i 16V	556003			807	
FRONTERA				2.0	556040
2.2 i	556125			BOXER	
KADETT				2.0 i	556030
1.3 i Cat	556001			2.0 i	556041
1.4 i	556001			2.0 i 4x4	556041
1.6 i	556002			EXPERT	
1.6 i	556074			2.0	556040
1.6 i Cat	556002			PARTNER	
1.6 i Cat	556074			1.1	556039
1.8 i	556002			1.1	556065
1.8 i	556074			1.4	556034
OMEGA					
2.0	556125				
2.0 16V	556005				
SIGNUM					
1.9 CDTI	556088				

**ERA**

Valvole regime minimo Idle Control Valve

Applicazioni veicolari - Vehicles applications

1.4	556039
1.4	556042
1.4	556043
1.8	556032
RENAULT	
19	
1.4	556011
1.4	556038
1.8	556011
AVANTIME	
2.0 16V Turbo	556037
CLIO	
1.2	556011
1.2	556036
1.4	556011
1.4	556038
1.4	556057
1.4 16V	556037
1.6	556012
1.8	556011
2.0 16V Sport	556037
ESPACE	
2.0	556006
2.0 16V	556037
KANGOO	
1.2	556036
1.4	556057
LAGUNA	
1.8	556006
1.8	556011
1.8 16V	556037
2.0 16V	556037
2.0 16V	556071
2.0 16V IDE	556037
MEGANE	
1.4	556011
1.4	556038
1.4 16V	556037
1.4 e	556011
1.4 e	556038
1.4 e	556057
1.4 Eco	556011
1.4 Eco	556038
1.4 i	556011
1.4 i	556038
1.6 16V	556037
1.6 e	556012
1.6 e	556014
1.6 i	556014
1.8 16V	556035
2.0 16V	556037
2.0 i	556006
RAPID	
1.4	556038
SCÉNIC	
1.4 16V	556037
1.8 16V	556037
2.0 16V	556037
2.0 16V RX4	556037
TRAFIC II	
2.0	556037
TWINGO	
1.2	556036
1.2	556053
SAAB	
9-3	
1.9 TiD	556088
9-5	
1.9 TiD	556088
900	
2.0 Turbo	556124
2.1 -16	556124
9000	
2.0 -16 Turbo CD	556124
2.0 -16 Turbo CS	556124
2.3	556124
2.3 -16 CD	556124
2.3 -16 CS	556124
SEAT	
CORDOBA	
1.6 i	556065
IBIZA	
1.6 i	556065
VAUXHALL	
ASTRA	
1.2 16V	556013
1.4 16V	556003
1.4 i	556003
1.4 i 16V	556003
1.6 16V	556003
1.6 i	556003
1.6 i 16V	556003
1.6 Si	556003
1.9 CDTI	556088
1.9 CDTI 16V	556088
COMBO	
1.4	556003
CORSA	
1.0 i 12V	556013
1.2 i 16V	556013
1.4 i 16V	556003
1.4 i S	556003
1.6 GSI 16V	556003
1.6 i 16V	556003
CORSA Cabriolet	
1.4 i 16V	556003
NOVA	
1.4 i S	556003
1.6 GSI	556003
1.6 GSI Cat	556003
SIGNUM	
1.9 CDTI 16V	556088
TIGRA	
1.4 16V	556003
1.6 16V	556003
VECTRA	
1.6 i 16V	556003
1.9 CDTI 16V	556088
ZAFIRA	
1.6 16V	556003
1.9 CDTI	556088
VOLVO	
440	
1.8	556011
460	
1.8	556011
S40	
1.6	556071
1.8	556071
2.0	556071
V40	
1.6	556071
1.8	556071
2.0	556071
VW	
CORRADO	
2.0 i	556017
GOLF	
1.6	556065
1.8 GTI	556124
1.8 GTI 16V	556124
1.8 GTI Cat	556017
1.8 Syncro	556017
2.0	556017
JETTA	
1.8	556124
1.8 16V	556124
1.8 Cat	556017
PASSAT	
1.6	556011
2.0	556017
2.0 Syncro	556017
2.2	556124
2.2 Syncro	556124
PHAETON	
3.0 V6 TDI 4motion	556128
3.0 V6 TDI 4motion	556272
POLO	
45 1.0	556065
55 1.3	556065
75 1.6	556065
SCIROCOCO	
1.8 16V	556124
TOUAREG	
3.0 TDI	556128
3.0 V6 TDI	556128
3.0 V6 TDI	556272
4.2 V8 TDI	556272
TRANSPORTER	
2.5 Syncro	556017
VENTO	
2.0	556017



ERA

Idle Control Valves

ERA Code	Subgroup	OE / Comparable code	Used on vehicles
556000	IDLE CONTROL VALVE	FORD 1014398, 1063996, 7084580, 95BF 9F715 AB, 95BF 9F715 AC, 95XF 9F715 AA HITACHI AESP1 062B, AESP10-62BSP PIERBURG 4.02003.32.0, 7.06269.02.0 VDO X10-739-002-003	FORD ESCORT, ESCORT CLASSIC, FIESTA, KA
Number of connectors: 2, Operating Mode: Electric			
556001	IDLE CONTROL VALVE	OPEL 17 112 027, 8 17 254 PIERBURG 4.07501.51.0, 7.05432.01.0 VDO A95160	OPEL ASTRA, COMBO, CORSA, KADETT
Number of connectors: 4, Operating Mode: Electric			
556002	IDLE CONTROL VALVE	OPEL 17 112 023, 17 112 031, 8 17 253, 8 17 255 PIERBURG 4.07501.50.0, 7.05432.00.0 VDO A95214	OPEL ASCONA, ASTRA, COMBO, CORSA, KADETT, VECTRA
Number of connectors: 4, Operating Mode: Electric			
556003	IDLE CONTROL VALVE	OPEL 17 108 187, 17 111 946, 17 113 196, 8 17 256, 8 26 548, 8 26 550 PIERBURG 7.05432.11.0 VDO C95166	OPEL ASTRA, COMBO, CORSA, TIGRA, VECTRA, ZAFIRA VAUXHALL ASTRA, COMBO, CORSA, NOVA, TIGRA, VECTRA, ZAFIRA
Number of connectors: 4, Operating Mode: Electric			
556004	IDLE CONTROL VALVE	FIAT 9943223, 9949146 VDO A95140	LANCIA DEDRA
Number of connectors: 4, Operating Mode: Electric			
556005	IDLE CONTROL VALVE	GENERAL MOTORS 90 411 546 HITACHI AESP20-713A, U090-06 OPEL 08 37 102, 8 37 102, 90 411 546, 93 177 025 PIERBURG 4.02003.01.0, 7.06269.01.0 VDO X10-739-002-001	OPEL ASTRA, CALIBRA, OMEGA, VECTRA
Number of connectors: 2, Operating Mode: Electric			



ERA

Idle Control Valves

ERA Code	Subgroup	OE / Comparable code	Used on vehicles
556006	IDLE CONTROL VALVE	HITACHI 4004-0041, AESP2 0717, AESP20-717A, U090-05 PIERBURG 4.02003.57.0, 7.06269.07.0 RENAULT 77 00 870 084, 82 00 211 431 VDO A2C59514682	RENAULT ESPACE, LAGUNA, MEGANE
Number of connectors: 2, Operating Mode: Electric			
556007	IDLE CONTROL VALVE	CHRYSLER 4288298, 4298298, 4300264, 4307899, 4419639, 4458354, 4458355, 4861084	CHRYSLER VOYAGER
Number of connectors: 4, Operating Mode: Electric			
556008	IDLE CONTROL VALVE	FIAT 60576708 MAGNETI MARELLI 211080050500, B06 VDO A95275	ALFA ROMEO 33
Number of connectors: 4, Operating Mode: Electric			
556009	IDLE CONTROL VALVE	FIAT 9944470, 9949159 MAGNETI MARELLI 219244070501, B01 VDO A95273	FIAT CINQUECENTO, PANDA, SEICENTO / 600
Number of connectors: 4, Operating Mode: Electric			
556010	IDLE CONTROL VALVE	CITROËN/PEUGEOT 1920 CV MAGNETI MARELLI 801011185901, B36 VDO A96160	PEUGEOT 106, 206
Number of connectors: 4, Operating Mode: Electric			
556011	IDLE CONTROL VALVE	BMW 13 54 1 464 908 BOSCH 0 132 008 600, 3 437 010 524 CITROËN/PEUGEOT 1920 F8, 95 651 031 FIAT 7077494, 9942142 RENAULT 77 01 035 321 VOLVO 3345231 VW 051 133 031	AUTOBIANCHI Y10 CITROËN AX, BX, C15, ZX FIAT FIORINO, FIORINO Pick up, PANDA, REGATA, RITMO, SCUDO, TEMPRA, TIPO, UNO LANCIA DEDRA, DELTA, Y10 PEUGEOT 106, 205, 306, 309 RENAULT 19, CLIO, LAGUNA, MEGANE VOLVO 440, 460 VW PASSAT
Number of connectors: 4, Operating Mode: Electric			



ERA Code	Subgroup	OE / Comparable code	Used on vehicles
556012	IDLE CONTROL VALVE	RENAULT 77 01 047 909 VDO D95174	RENAULT CLIO, MEGANE
Number of connectors: 4, Operating Mode: Electric			
556013	IDLE CONTROL VALVE	BOSCH 0 132 008 602 OPEL 8 25 485, 90 531 999	OPEL ASTRA, CORSA VAUXHALL ASTRA, CORSA
Number of connectors: 4, Operating Mode: Electric			
556014	IDLE CONTROL VALVE	MAGNETI MARELLI 230016079207 RENAULT 77 01 042 784 VDO C95177	RENAULT MEGANE
Number of connectors: 4, Operating Mode: Electric			
556015	IDLE CONTROL VALVE	VDO C95105 VW 078 133 455	AUDI 100, 80, A4, CABRIOLET, COUPE
Number of connectors: 4, Operating Mode: Electric			
556016	IDLE CONTROL VALVE	CITROËN/PEUGEOT 00 001 920 AQ, 1920 AQ VDO A96159	PEUGEOT 306
Number of connectors: 4, Operating Mode: Electric			
556017	IDLE CONTROL VALVE	VDO 408-202-011-002, 408-202-011-002G, 408-202-011-002Z VW 037 906 457 C	VW CORRADO, GOLF, JETTA, PASSAT, TRANSPORTER, VENTO
Number of connectors: 2, Operating Mode: Electric			



ERA

Idle Control Valves

ERA Code	Subgroup	OE / Comparable code	Used on vehicles
556018	IDLE CONTROL VALVE	FORD 6617092, 928F 9F715 AE HITACHI AESP-2063	FORD ESCORT, FIESTA, ORION
Number of connectors: 2, Operating Mode: Electric			
556019	IDLE CONTROL VALVE	FORD 6464929, 91XF 9F715 BA HITACHI AESP-2052 PIERBURG 4.02003.60.0 VDO X10-739-002-004	FORD ESCORT, FIESTA, ORION
Number of connectors: 2, Operating Mode: Electric			
556020	IDLE CONTROL VALVE	FORD 1058383, 7132628, 95WF 9F715 AC, 95WF 9F715 AD HITACHI AESP1 061C, AESP10-61CSP PIERBURG 4.02003.62.0 VDO X10-739-002-002	FORD ESCORT, GALAXY, SCORPIO, TRANSIT
Number of connectors: 2, Operating Mode: Electric			
556021	IDLE CONTROL VALVE	FORD 1022494, 978F 9F715 AB	FORD COUGAR, MONDEO
Number of connectors: 2, Operating Mode: Electric			
556022	IDLE CONTROL VALVE	FORD 1113127, 1S4U 9F715 BC	FORD FOCUS
Number of connectors: 2, Operating Mode: Electric			
556023	IDLE CONTROL VALVE	FORD 1113873, 1355402, 1358402, 1S7G 9F715 AD, 1S7G 9F715 AE MAZDA 20LF-01-660, LF01-20-660, LF01-20660-Z07	FORD MONDEO
Number of connectors: 2, Operating Mode: Electric			



ERA

Idle Control Valves

ERA Code	Subgroup	OE / Comparable code	Used on vehicles
556024	IDLE CONTROL VALVE	FORD 1030996, 1086466, XS4U 9F715 BB	FORD PUMA
Number of connectors: 2, Operating Mode: Electric			
556025	IDLE CONTROL VALVE	FORD 1075436, 1112972, 1149611, XS4U 9F715 DA, XS4U 9F715 DB, XS4U 9F715 FA PIEBURG 4.02003.54.0, 7.06269.04.0	FORD FIESTA, FOCUS, PUMA
Number of connectors: 2, Operating Mode: Electric			
556026	IDLE CONTROL VALVE	FORD 1086369, XS6U 9F715 AA HITACHI AESP1 062A, AESP10-62ASP PIEBURG 7.06269.03.0	FORD ESCORT, FIESTA, FOCUS, KA, TOURNEO CONNECT, TRANSIT CONNECT
Number of connectors: 2, Operating Mode: Electric			
556027	IDLE CONTROL VALVE	FORD 1628247, 6172132, 6188593, 6631855, 87TF 9F715 AA, 87TF 9F715 CA, 87TF 9F715 CB, E3EE-9F715A-1B HITACHI AESP20-711A VDO X10-739-002-005	FORD ESCORT, SCORPIO, SIERRA, TRANSIT
Number of connectors: 2, Operating Mode: Electric			
556028	IDLE CONTROL VALVE	FORD 1110967, YS6A 9F715 AB VDO A98101	FORD FIESTA
Number of connectors: 4, Operating Mode: Electric			
556029	IDLE CONTROL VALVE	FORD 1149683, 2S6A 9F715 BA, 2S6A 9F715 BB, 2SA9-F715B-A, 4940126 VDO A98102, S 108 747 003	FORD KA
Number of connectors: 4, Operating Mode: Electric			



ERA

Idle Control Valves

ERA Code	Subgroup	OE / Comparable code	Used on vehicles
556030	IDLE CONTROL VALVE	CITROËN/PEUGEOT 00 001 920 N1, 1635 52, 1920 N1, 95 644 484, 96 069 888 FIAT 9564448480 MAGNETI MARELLI 230016079057, B04 PIERBURG 4.07501.02.0, 7.05432.02.0 VDO A95269	PEUGEOT 306, 405, 406, 806, BOXER
Number of connectors: 4, Operating Mode: Electric			
556031	IDLE CONTROL VALVE	CITROËN/PEUGEOT 00 001 920 2Q, 1920 2Q MAGNETI MARELLI 230016079107, B17 VDO A96144	PEUGEOT 106
Number of connectors: 4, Operating Mode: Electric			
556032	IDLE CONTROL VALVE	CITROËN/PEUGEOT 00 001 920 4X, 1920 4X MAGNETI MARELLI 801000776401, B22/1 PIERBURG 7.05432.06.0 VDO A97104, A97113	PEUGEOT 306, 406, PARTNER
Number of connectors: 4, Operating Mode: Electric			
556033	IDLE CONTROL VALVE	CITROËN/PEUGEOT 00 001 920 5F, 1920 5F MAGNETI MARELLI 230016079197, B27 VDO A97108	PEUGEOT 106, 206
Number of connectors: 4, Operating Mode: Electric			
556034	IDLE CONTROL VALVE	CITROËN/PEUGEOT 00 001 920 6W, 1920 6W MAGNETI MARELLI 230016079247, B32/00 VDO A97115	PEUGEOT 106, 206, 306, PARTNER
Number of connectors: 4, Operating Mode: Electric			
556035	IDLE CONTROL VALVE	VDO D95103	RENAULT MEGANE
Number of connectors: 4, Operating Mode: Electric			

**ERA***Idle Control Valves*

ERA Code	Subgroup	OE / Comparable code	Used on vehicles
556036	IDLE CONTROL VALVE	RENAULT 77 01 042 403 VDO ATU02300R, D95129	RENAULT CLIO, KANGOO, TWINGO
Number of connectors: 4, Operating Mode: Electric			
556037	IDLE CONTROL VALVE	RENAULT 77 00 102 539, 82 00 299 241, 82 00 692 605 VDO D95166	OPEL VIVARO RENAULT AVANTIME, CLIO, ESPACE, LAGUNA, MEGANE, SCÉNIC, TRAFIC II
Number of connectors: 4, Operating Mode: Electric			
556038	IDLE CONTROL VALVE	RENAULT 77 01 206 370 VDO D95177	RENAULT 19, CLIO, MEGANE, RAPID
Number of connectors: 4, Operating Mode: Electric			
556039	IDLE CONTROL VALVE	CITROËN/PEUGEOT 00 001 920 AH, 1920 AH MAGNETI MARELLI 801001185201, B35 VDO A96157	PEUGEOT 106, 206, 306, 307, PARTNER
Number of connectors: 4, Operating Mode: Electric			
556040	IDLE CONTROL VALVE	CITROËN/PEUGEOT 00 001 920 8X, 1920 8X, 94 633 275 80 MAGNETI MARELLI 230016079217, 801001184401, B33 VDO A96158, A97116	CITROËN C5, EVASION, JUMPY, XSARA, XSARA PICASSO PEUGEOT 206, 307, 406, 806, 807, EXPERT
Number of connectors: 4, Operating Mode: Electric			
556041	IDLE CONTROL VALVE	CITROËN/PEUGEOT 00 001 920 X9, 1920 X9 VDO C95197	PEUGEOT 306, 405, 406, 605, 806, BOXER
Number of connectors: 4, Operating Mode: Electric			



ERA

Idle Control Valves

ERA Code	Subgroup	OE / Comparable code	Used on vehicles
556042	IDLE CONTROL VALVE	CITROËN/PEUGEOT 00 001 920 9L, 1920 9L MAGNETI MARELLI 801001301601 VDO A97122	PEUGEOT 106, 206, 306, PARTNER
Number of connectors: 4, Operating Mode: Electric			
556043	IDLE CONTROL VALVE	CITROËN/PEUGEOT 1920 1F MAGNETI MARELLI 230016079167, B24/00 VDO A97101	PEUGEOT 106, 306, PARTNER
Number of connectors: 4, Operating Mode: Electric			
556044	IDLE CONTROL VALVE	FIAT 7766269, 9945635, 9950635 MAGNETI MARELLI 219244290500, B02 PIERBURG 7.05432.09.0 VDO C95128	ALFA ROMEO 145, 146 FIAT BRAVA, BRAVO, MAREA, PALIO, SIENA, TEMPRA, TIPO LANCIA DELTA
Number of connectors: 4, Operating Mode: Electric			
556045	IDLE CONTROL VALVE	FIAT 9945035 MAGNETI MARELLI 219244270500, B12 VDO C95136	FIAT PANDA, PUNTO, UNO LANCIA Y10
Number of connectors: 4, Operating Mode: Electric			
556046	IDLE CONTROL VALVE	CITROËN/PEUGEOT 1920 V7 MAGNETI MARELLI 230016079087, B13 VDO C95181	PEUGEOT 106, 306, 406
Number of connectors: 4, Operating Mode: Electric			
556047	IDLE CONTROL VALVE	FIAT 9945776 MAGNETI MARELLI 219244370500, B18 VDO C95196	FIAT PALIO, PUNTO, SIENA, STRADA
Number of connectors: 4, Operating Mode: Electric			



ERA

Idle Control Valves

ERA Code	Subgroup	OE / Comparable code	Used on vehicles
556048	IDLE CONTROL VALVE	DAEWOO 93 740 918, 93 742 607 GENERAL MOTORS 734613, 734615, C16/30 MAGNETI MARELLI 820003368010, B3368	DAEWOO MATIZ
Number of connectors: 4, Operating Mode: Electric			
556049	IDLE CONTROL VALVE	FORD 6944998, 7117213, 938F 9F715 AB, 938F 9F715 AC	FORD FIESTA, MONDEO
Number of connectors: 2, Operating Mode: Electric			
556050	IDLE CONTROL VALVE	FORD 1114071, 1126997, YL8U 9F715 AB, YL8U 9F715 AC, YL8Z 9F715 AA HITACHI ABV5-091, ABV5-091B MAZDA YF09-20660-A, YF09-20660-B	FORD MAVERICK MAZDA TRIBUTE
Number of connectors: 2, Operating Mode: Electric			
556051	IDLE CONTROL VALVE	FORD 1025702, 97JF 9F715 BA HITACHI AESP1 0919	FORD USA EXPLORER
Number of connectors: 2, Operating Mode: Electric			
556052	IDLE CONTROL VALVE	FIAT 46553965, 71718105 MAGNETI MARELLI 806001508801, KIT EC2/1	FIAT 500, DOBLO, GRANDE PUNTO, LINEA, PALIO, PANDA, PUNTO, SEICENTO / 600, STRADA LANCIA MUSA, Y, YPSILON
Number of connectors: 2, Operating Mode: Electric			
556053	IDLE CONTROL VALVE	CITROËN/PEUGEOT 00 001 920 Q8, 1920 Q8, 95 644 634, 95 644 634 80 MAGNETI MARELLI 230016079047, B03 RENAULT 77 01 204 054 VDO A95262, B03/01	CITROËN AX PEUGEOT 106, 205, 306 RENAULT TWINGO
Number of connectors: 4, Operating Mode: Electric			



ERA

Idle Control Valves

ERA Code	Subgroup	OE / Comparable code	Used on vehicles
556054	IDLE CONTROL VALVE	CITROËN/PEUGEOT 1920 CA MAGNETI MARELLI 820003389010, B3389 VDO A96156	CITROËN C5, XSARA PICASSO PEUGEOT 406
Number of connectors: 4, Operating Mode: Electric			
556055	IDLE CONTROL VALVE	CITROËN/PEUGEOT 1920 W6 MAGNETI MARELLI 230016079077, B14 PIERBURG 7.05432.04.0 VDO B14/00, C95185	CITROËN AX, ZX PEUGEOT 306
Number of connectors: 4, Operating Mode: Electric			
556056	IDLE CONTROL VALVE	BMW 11 66 7 502 656, 11 66 7 534 236, 11 66 7 542 498, 11 66 7 635 656, 7 502 656, 7 534 236, 7 542 498, 7 635 656 BMW MOTORCYCLES 11667502656, 11667534236, 11667542498, 11667635656, 7502656, 7534236, 7542498, 7635656 PIERBURG 4.07501.52.0, 7.05432.12.0, 7.24807.22.0 VDO D95109 VW 078 133 455 D	AUDI 80, A4, A6, CABRIOLET, COUPE BMW 1, 3, 5, X1, X3, Z4
Number of connectors: 4, Operating Mode: Electric			
556057	IDLE CONTROL VALVE	RENAULT 77 01 044 401 VDO D95134	RENAULT CLIO, KANGOO, MEGANE
Number of connectors: 4, Operating Mode: Electric			
556058	IDLE CONTROL VALVE	FORD 1019013, 1041963, 96XF 9F715 AA, 96XF 9F715 BA	FORD GALAXY, SCORPIO
Number of connectors: 2, Operating Mode: Electric			
556059	IDLE CONTROL VALVE	FORD 1115250, XM2U 9F715 BA HITACHI AESP1 09S2 PIERBURG 7.06269.05.0	FORD GALAXY, TRANSIT
Number of connectors: 2, Operating Mode: Electric			



ERA

Idle Control Valves

ERA Code	Subgroup	OE / Comparable code	Used on vehicles
556060	IDLE CONTROL VALVE	FORD 3909620, 7212143, F53E 9F715 AA, F53E 9F715 AB HITACHI AESP1 0925 PIERBURG 7.06269.11.0	FORD MONDEO
Number of connectors: 2, Operating Mode: Electric			
556061	IDLE CONTROL VALVE	FORD 1S7E 9F715 CA, 1S7Z 9F715 CA, 4138506 PIERBURG 7.06269.10.0	FORD COUGAR, MONDEO
Number of connectors: 2, Operating Mode: Electric			
556062	IDLE CONTROL VALVE	FORD 2S7E 9F715 AA, 4383663	FORD MONDEO
Number of connectors: 2, Operating Mode: Electric			
556063	IDLE CONTROL VALVE	FORD 4391570, 4429072, XS2E 9F715 BB, XS2E 9F715 BC	FORD COUGAR, MONDEO
Number of connectors: 2, Operating Mode: Electric			
556064	IDLE CONTROL VALVE	FORD 6504566, 6632027, 91XF 9F715 AA, 91XF 9F715 AB	FORD ESCORT
Number of connectors: 2, Operating Mode: Electric			
556065	IDLE CONTROL VALVE	BOSCH 0 132 008 601, 3 437 010 915 CITROËN/PEUGEOT 1920 3R, 1920 5Z VW 032 133 031, 048 133 031	CITROËN BERLINGO, SAXO PEUGEOT 106, 306, PARTNER SEAT CORDOBA, IBIZA VW GOLF, POLO
Number of connectors: 6, Operating Mode: Electric			



ERA

Idle Control Valves

ERA Code	Subgroup	OE / Comparable code	Used on vehicles
556066	IDLE CONTROL VALVE	MAZDA FSN5-20660-A, FSN5-20660-B MITSUBISHI E009T06871, E9T06871	MAZDA 323 S, 626, MPV, PREMACY
Number of connectors: 2, Operating Mode: Electric			
556067	IDLE CONTROL VALVE	MAZDA FS02-20-660	MAZDA 626, MX-6
Cable Length [mm]: 270, Number of connectors: 2, Operating Mode: Electric			
556071	IDLE CONTROL VALVE	HITACHI AESP2 0912 PIERBURG 4.02003.59.0, 7.06269.09.0 RENAULT 77 00 859 134 VDO A2C59514681 VOLVO 70859134	RENAULT LAGUNA VOLVO S40, V40
Number of connectors: 2, Operating Mode: Electric			
556072	IDLE CONTROL VALVE	BOSCH 0 280 140 553, 0 280 140 571 FIAT 60811197, 7789627 IVECO 7789627 KIA 0K9A2-20-660A	ALFA ROMEO 145, 146, 155, 156, GTV, SPIDER FIAT BRAVO, COUPE, MAREA, PUNTO KIA CARENS, CARNIVAL, CLARUS, RIO, SEPHIA, SHUMA, SPORTAGE LANCIA KAPPA
Number of connectors: 3, Operating Mode: Electric			
556073	IDLE CONTROL VALVE	CHEVROLET 17 059 602, 93 744 675, 96 434 613 DAEWOO 17 059 602, 93 744 675, 96 434 613 VDO 59602	CHEVROLET AVEO DAEWOO KALOS, LANOS, NUBIRA
Number of connectors: 4, Operating Mode: Electric			
556074	IDLE CONTROL VALVE	CHEVROLET 17 059 603 OPEL 17 059 603	OPEL ASCONA, ASTRA, COMBO, CORSA, KADETT, VECTRA
Number of connectors: 4, Operating Mode: Electric			



ERA

Idle Control Valves

ERA Code	Subgroup	OE / Comparable code	Used on vehicles
556075	IDLE CONTROL VALVE	BOSCH 0 280 140 570 HYUNDAI 35150-33000, 35150-33001, 35150-33010 KIA 35150-33000, 35150-33010	HYUNDAI ACCENT, COUPE, H-1 / STAREX, MATRIX, TRAJET, TUCSON, XG
Number of connectors: 3, Operating Mode: Electric			
556076	IDLE CONTROL VALVE	HYUNDAI 35150-22600 KIA 35150-22600	HYUNDAI ACCENT, COUPE, ELANTRA, GETZ, MATRIX
Number of connectors: 3, Operating Mode: Electric			
556078	IDLE CONTROL VALVE	FORD 4010051, YF1E 9F715 AB, YF1Z 9F715 AA HITACHI AESP1 0938 MAZDA AJ03-20-660, AJ03-20660-A PIERBURG 7.06269.12.0	FORD MAVERICK MAZDA TRIBUTE
Number of connectors: 2, Operating Mode: Electric			
556080	IDLE CONTROL VALVE	LADA 2112-1148-300	LADA 110, 111, 112
Number of connectors: 4, Operating Mode: Electric			
556088	CONTROL, SWIRL COVERS	FIAT 55193942, 55199908, 55199915, 55205127, 55206457 OPEL 58 50 574, 8 50 440, 8 50 444, 93 183 260, 93 185 801 PIERBURG 7.00521.11.0, 7.00521.13.0, 7.00521.14.0 VAUXHALL 55 205 127, 8 50 440, 8 50 444, 93 183 260	ALFA ROMEO 147, 156, 159, GT FIAT CROMA, STILO OPEL ASTRA, SIGNUM, VECTRA, ZAFIRA SAAB 9-3, 9-5 VAUXHALL ASTRA, SIGNUM, VECTRA, ZAFIRA
Number of connectors: 4, Rotation Direction: Anti-clockwise rotation			
556089	CONTROL, SWIRL COVERS	MERCEDES-BENZ 640 150 04 94, 640 150 05 94, A 640 150 04 94, A 640 150 05 94 PIERBURG 7.01104.00.0, 7.01104.04.0, 7.01104.09.0	MERCEDES-BENZ A-CLASS, B-CLASS
Number of connectors: 4, Rotation Direction: Anti-clockwise rotation			

**ERA***Idle Control Valves*

ERA Code	Subgroup	OE / Comparable code	Used on vehicles
556090	CONTROL SWIRL COVERS 	MERCEDES-BENZ 642 150 00 94, 642 150 01 94, 642 150 02 94, 642 150 03 94, 642 150 04 94, A 642 150 00 94, A 642 150 01 94, A 642 150 02 94, A 642 150 03 94, A 642 150 04 94 PIERBURG 7.00197.05.0, 7.01132.08.0, 7.01132.11.0	CHRYSLER 300 C MERCEDES-BENZ C-CLASS, CLK, CLS, E-CLASS, G-CLASS, GL-CLASS, GLK-CLASS, M-CLASS, R-CLASS, S-CLASS, SPRINTER, VIANO, VITO, VITO / MIXTO
Number of connectors: 4, Rotation Direction: Anti-clockwise rotation			
556091	CONTROL SWIRL COVERS 	MERCEDES-BENZ 646 150 01 94, 646 150 03 94, A 646 150 01 94, A 646 150 03 94 PIERBURG 7.22644.21.0, 7.22644.33.0	MERCEDES-BENZ VIANO, VITO, VITO / MIXTO
Number of connectors: 3			
556092	CONTROL SWIRL COVERS 	MERCEDES-BENZ 613 150 00 94, 613 150 01 94, 613 150 02 94, 613 150 03 94, 613 150 04 94, 613 150 05 94, A 613 150 00 94, A 613 150 01 94, A 613 150 02 94, A 613 150 03 94, A 613 150 04 94, A 613 150 05 94 PIERBURG 7.22644.01.0, 7.22644.05.0, 7.22644.08.0, 7.22644.12.0, 7.22644.13.0, 7.22644.15.0, 7.22644.23.0	MERCEDES-BENZ E-CLASS, S-CLASS
Number of connectors: 3			
556093	CONTROL SWIRL COVERS 	MERCEDES-BENZ 611 150 00 94, 611 150 01 94, 611 150 02 94, 611 150 03 94, 611 150 04 94, 611 150 07 94, A 611 150 00 94, A 611 150 01 94, A 611 150 02 94, A 611 150 03 94, A 611 150 04 94, A 611 150 07 94 PIERBURG 7.22644.11.0, 7.22644.24.0	MERCEDES-BENZ C-CLASS, CLK, E-CLASS, M-CLASS
Number of connectors: 3			
556097	IDLE CONTROL VALVE 	CITROËN/PEUGEOT 00 001 920 9V, 1920 9V MAGNETI MARELLI 230016079227 VDO A97110	PEUGEOT 206
Number of connectors: 4, Operating Mode: Electric			
556098	IDLE CONTROL VALVE 	VDO C95184	CITROËN SAXO PEUGEOT 106
Operating Mode: Electric			



ERA Code	Subgroup	OE / Comparable code	Used on vehicles
556117	IDLE CONTROL VALVE	DAEWOO 92 061 898 GENERAL MOTORS 92 061 898	CHEVROLET EVANDA, REZZO DAEWOO EVANDA, LEGANZA, NUBIRA, REZZO
Number of connectors: 4, Operating Mode: Electric			
556123	IDLE CONTROL VALVE	HYUNDAI 35150-02600 KIA 35150-02600	HYUNDAI ATOS, ATOS PRIME, GETZ
Number of connectors: 3, Operating Mode: Electric			
556124	IDLE CONTROL VALVE	BOSCH 0 280 140 505 FERRARI 142432 FIAT 60562537, 60813324, 7637024 HYUNDAI 35150-22000 IVECO 7637024 KIA 0K011-20660 SAAB 88 57 179 VW 034 133 455	ALFA ROMEO 155, 164, GTV, SPIDER AUDI COUPE FERRARI 348 tb/GTB, 348 ts/GTS, 5__ MARANELLO, 512 TR, F355, F355 Berlinetta, MONDIAL FIAT CROMA, PUNTO HYUNDAI ACCENT, COUPE, LANTRA, PONY, PONY / EXCEL, S COUPE KIA SPORTAGE LANCIA KAPPA, THEMA SAAB 900, 9000 VW GOLF, JETTA, PASSAT, SCIROCCO
Number of connectors: 3, Operating Mode: Electric			
556125	IDLE CONTROL VALVE	GENERAL MOTORS 90 469 595, 90 512 528 OPEL 08 26 549, 08 26 551, 826549, 826551	OPEL FRONTERA, OMEGA, SINTRA, VECTRA
Number of connectors: 2, Operating Mode: Electric			
556128	CONTROL SWIRL COVERS	VDO A2C53308513, A2C59513862 VW 059 129 086 D, 059 129 086 M	AUDI A4, A6, A6 Allroad, A8, Q7 VW PHAETON, TOUAREG
Number of connectors: 4			
556141	IDLE CONTROL VALVE	CITROËN/PEUGEOT 0345 95 MAGNETI MARELLI 801000800401	CITROËN SAXO PEUGEOT 306
Number of connectors: 4, Operating Mode: Electric			



ERA

Idle Control Valves

ERA Code	Subgroup	OE / Comparable code	Used on vehicles
556265	IDLE CONTROL VALVE	FIAT 46451794 MAGNETI MARELLI 211080005601, 219244820500, B2001	FIAT PALIO, SIENA
Number of connectors: 4			
556266	IDLE CONTROL VALVE	BOSCH F 000 99M 187, F 000 99M 600 CHEVROLET 17 059 600, 93 214 071, 93 277 506, 94 700 309	OPEL ASTRA, ASTRA F CLASSIC, COMBO, TIGRA, VECTRA
Number of connectors: 4			
556270	IDLE CONTROL VALVE	LAND ROVER ERR 4352	LAND ROVER DISCOVERY, RANGE ROVER
Number of connectors: 4, Operating Mode: Electric			
556272	CONTROL SWIRL COVERS	VDO A2C59506248, a2c92454500 VW 059 129 086 G, 059 129 086 J, 059 129 086 K, 059 129 086 L	AUDI A4, A4 Allroad, A5, A6, A6 Allroad, A8, Q5, Q7 VW PHAETON, TOUAREG
Number of connectors: 5			

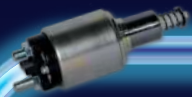
**ERA**

Valvole regime minimo Idle control valves

Tavole Comparative - Cross Reference List

219244270500	556045	642 150 01 94	556090	4.07501.52.0	556056	A2C59513862	556128	
219244290500	556044	642 150 02 94	556090	7.00197.05.0	556090	A2C59514681	556071	
219244370500	556047	642 150 03 94	556090	7.00521.11.0	556088	A2C59514682	556006	
219244820500	556265	642 150 04 94	556090	7.00521.13.0	556088	a2c92454500	556272	
230016079047	556053	646 150 01 94	556091	7.00521.14.0	556088	A95140	556004	
230016079057	556030	646 150 03 94	556091	7.01104.00.0	556089	A95160	556001	
230016079077	556055	A 611 150 00 94	556093	7.01104.04.0	556089	A95214	556002	
230016079087	556046	A 611 150 01 94	556093	7.01104.09.0	556089	A95262	556053	
230016079107	556031	A 611 150 02 94	556093	7.01132.08.0	556090	A95269	556030	
230016079167	556043	A 611 150 03 94	556093	7.01132.11.0	556090	A95273	556009	
230016079197	556033	A 611 150 04 94	556093	7.05432.00.0	556002	A95275	556008	
230016079207	556014	A 611 150 07 94	556093	7.05432.01.0	556001	A96144	556031	
230016079217	556040	A 613 150 00 94	556092	7.05432.02.0	556030	A96156	556054	
230016079227	556097	A 613 150 01 94	556092	7.05432.04.0	556055	A96157	556039	
230016079247	556034	A 613 150 02 94	556092	7.05432.06.0	556032	A96158	556040	
801000776401	556032	A 613 150 03 94	556092	7.05432.09.0	556044	A96159	556016	
801000800401	556141	A 613 150 04 94	556092	7.05432.11.0	556003	A96160	556010	
801001184401	556040	A 613 150 05 94	556092	7.05432.12.0	556056	A97101	556043	
801001185201	556039	A 640 150 04 94	556089	7.06269.01.0	556005	A97104	556032	
801001301601	556042	A 640 150 05 94	556089	7.06269.02.0	556000	A97108	556033	
801011185901	556010	A 642 150 00 94	556090	7.06269.03.0	556026	A97110	556097	
806001508801	556052	A 642 150 01 94	556090	7.06269.04.0	556025	A97113	556032	
820003368010	556048	A 642 150 02 94	556090	7.06269.05.0	556059	A97115	556034	
820003389010	556054	A 642 150 03 94	556090	7.06269.07.0	556006	A97116	556040	
B01	556009	A 642 150 04 94	556090	7.06269.09.0	556071	A97122	556042	
B02	556044	A 646 150 01 94	556091	7.06269.10.0	556061	A98101	556028	
B03	556053	A 646 150 03 94	556091	7.06269.11.0	556060	A98102	556029	
B04	556030					556078	ATU02300R	556036
B06	556008					556092	B03/01	556053
B12	556045					556092	B14/00	556055
B13	556046					556092	C95105	556015
B14	556055					556093	C95128	556044
B17	556031					556092	C95136	556045
B18	556047					556092	C95166	556003
B2001	556265					556092	C95177	556014
B22/1	556032					556091	C95181	556046
B24/00	556043					556092	C95184	556098
B27	556033					556093	C95185	556055
B32/00	556034					556091	C95196	556047
B33	556040					556056	C95197	556041
B3368	556048							
B3389	556054							
B35	556039							
B36	556010							
KIT EC2/1	556052							
MAZDA								
20LF-01-660	556023							
AJ03-20-660	556078							
AJ03-20660-A	556078							
FS02-20-660	556067							
F5N5-20660-A	556066							
F5N5-20660-B	556066							
LF01-20-660	556023							
LF01-20660-Z07	556023							
YF09-20660-A	556050							
YF09-20660-B	556050							
MERCEDES-BENZ								
611 150 00 94	556093							
611 150 01 94	556093							
611 150 02 94	556093							
611 150 03 94	556093							
611 150 04 94	556093							
611 150 07 94	556093							
613 150 00 94	556092							
613 150 01 94	556092							
613 150 02 94	556092							
613 150 03 94	556092							
613 150 04 94	556092							
613 150 05 94	556092							
640 150 04 94	556089							
640 150 05 94	556089							
642 150 00 94	556090							
PIERBURG								
4.02003.01.0	556005							
4.02003.32.0	556000							
4.02003.54.0	556025							
4.02003.57.0	556006							
4.02003.59.0	556071							
4.02003.60.0	556019							
4.02003.62.0	556020							
4.07501.02.0	556030							
4.07501.50.0	556002							
4.07501.51.0	556001							
MITSUBISHI								
E009T06871	556066							
E9T06871	556066							
OPEL								
08 26 549	556125							
08 26 551	556125							
08 37 102	556005							
17 059 603	556074							
17 108 187	556003							
17 111 946	556003							
17 112 023	556002							
17 112 027	556001							
17 112 031	556002							
17 113 196	556003							
58 50 574	556088							
8 17 253	556002							
8 17 254	556001							
8 17 255	556002							
8 17 256	556003							
8 25 485	556013							
8 26 548	556003							
8 26 550	556003							
8 37 102	556005							
8 50 440	556088							
8 50 444	556088							
826549	556125							
826551	556125							
90 411 546	556005							
90 531 999	556013							
93 177 025	556005							
93 183 260	556088							
93 185 801	556088							
RENAULT								
77 00 102 539	556037							
77 00 859 134	556071							
77 00 870 084	556006							
77 01 035 321	556011							
77 01 042 403	556036							
77 01 042 784	556014							
77 01 044 401	556057							
77 01 047 909	556012							
77 01 204 054	556053							
77 01 206 370	556038							
82 00 211 431	556006							
82 00 299 241	556037							
82 00 692 605	556037							
SAAB								
88 57 179	556124							
VAUXHALL								
55 205 127	556088							
8 50 440	556088							
8 50 444	556088							
93 183 260	556088							
VDO								
408-202-011-002	556017							
408-202-011-002G	556017							
408-202-011-002Z	556017							
59602	556073							
A2C53308513	556128							
A2C59506248	556272							
VOLVO								
3345231	556011							
70859134	556071							
VW								
032 133 031	556065							
034 133 455	556124							
037 906 457 C	556017							
048 133 031	556065							
051 133 031	556011							
059 129 086 D	556128							
059 129 086 G	556272							
059 129 086 J	556272							
059 129 086 K	556272							
059 129 086 L	556272							
059 129 086 M	556128							
078 133 455	556015							
078 133 455 D	556056							

Elettromagneti
Solenoid switches



Pignoni e Pulegge
Pulleys and Starter drives



Ricambi per macchine rotanti
Spare parts for rotating electrics



Macchine rotanti
Rotating electrics



Sensori
Sensors



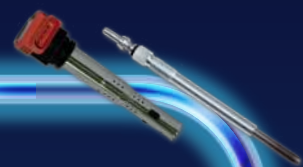
Interruttori
Switches



Interruttori abitacolo
Dashboard switches



Bobine e Candelette
Ignition coils & Glow plugs



Corpi farfallati
Throttle bodies



Valvole EGR
EGR valves



Motorini tergicristallo e Pompe lavavetri
Wiper motors & Washer pumps



Devioguida
Steering column switches



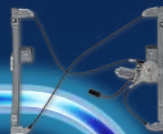
Pompe e Gruppi carburante
Fuel pumps & Fuel feed units



Termostati
Thermostats



Alzacristalli
Window lifts



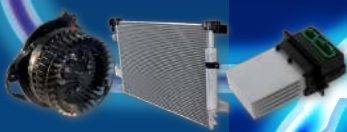
Relè
Relays



Bloccasterzi
Steering locks



Sistema aria condizionata
Air conditioning systems



Our catalogues are available on
www.eraspares.com



a Rhiag Group company